

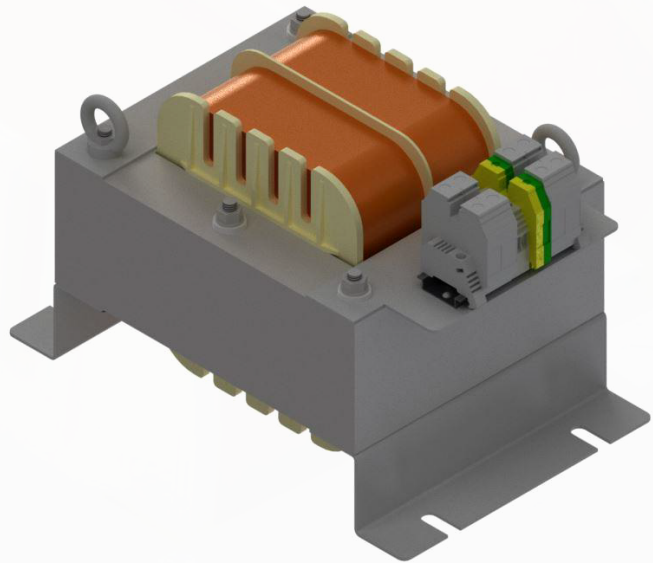
ETK TRM8

Isolating single-phase transformer for medical use $V_{cc} > 8\%$

GENERAL INFORMATION

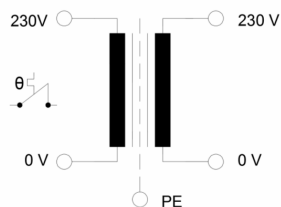
Single-phase transformer with galvanic isolation between primary and secondary, for assembly in medical facilities with an IT system, such as surgical units, ICU, UVI, resuscitation, in accordance with IEC EN 61558-2-15: 2012.

Transformers with a high short-circuit voltage, indicated to allow the use in the primary circuit of the adequate protection against overcurrents and can achieve a correct coordination or selectivity of the protections. In this way it is possible to avoid that short-circuit transients, in one of the powered systems or equipment, may cause the interruption of the electrical supply of the entire installation.



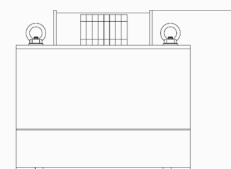
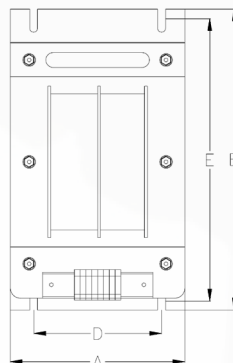
TECHNICAL DATA

POWER	1 - 10kVA
PRIMARY VOLTAGE	230V~
SECONDARY VOLTAGE	230V~
Frequency	50/60 Hz
Ambient temperature	40°C
Thermal class	F (155°C)
Protection index	IP 00
Electric shock protection	Clase I
Test voltage	4,5kV
Connection current	< 8 In
PRI vacuum intensity	< 3%
Short-circuit voltage	> 8,5%
Leakage current	< 0,5 mA
Insulation resistance	> 7 MΩ



VERSIONS AND DIMENSIONS

REFERENCE	POWER (kVA)	DIMENSIONS (mm)					WEIGHT (kg)
		A	B	C	D	E	
ETK TRM8 2000	2	200	320	190	120	280	31
ETK TRM8 3000	3	200	320	210	120	280	40
ETK TRM8 3500	3,5	200	320	230	120	280	45
ETK TRM8 4000	4	250	400	220	150	370	56
ETK TRM8 5000	5	250	400	240	150	370	65
ETK TRM8 6300	6,3	250	400	260	150	370	80
ETK TRM8 7500	7,5	250	400	280	150	370	92
ETK TRM8 10000	10	300	460	300	150	430	125



REGULATIONS

IEC EN 61558-2-15:2012
IEC EN 61558-1: 2007

