

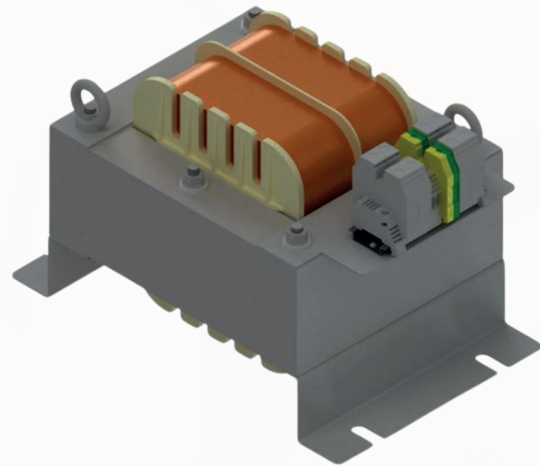
ETKM TRM8

Isolating single-phase transformer for medical use $V_{cc} > 8\%$

GENERAL INFORMATION

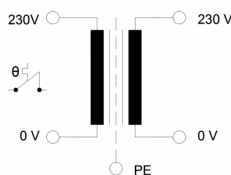
Single-phase transformer with galvanic isolation between primary and secondary, for assembly in medical facilities with an IT system, such as surgical units, ICU, UVI, resuscitation, in accordance with IEC EN 61558-2-15: 2012.

Transformers with a high short-circuit voltage, indicated to allow the use in the primary circuit of the adequate protection against overcurrents and can achieve a correct coordination or selectivity of the protections. In this way it is possible to avoid that short-circuit transients, in one of the powered systems or equipment, may cause the interruption of the electrical supply of the entire installation.



TECHNICAL DATA

POWER	1 - 10kVA
PRIMARY VOLTAGE	230V~
SECONDARY VOLTAGE	230V~
Frequency	50/60 Hz
Ambient temperature	40°C
Thermal class	F (155°C)
Protection index	IP 00
Electric shock protection	Clase I
Test voltage	4,5kV
Connection current	< 8 In
PRI vacuum intensity	< 3%
Short-circuit voltage	> 8%
Leakage current	40 µA
Insulation resistance	> 8 MΩ
Strength Dielectric test between live parts	4600V
Strength Dielectric test between live parts and mass	4600V



REGULATIONS

IEC EN 61558-2-15:2012
IEC EN 61558-1: 2007

VERSIONS AND DIMENSIONS

REFERENCE	POWER (kVA)	DIMENSIONS (mm)					WEIGHT (kg)
		A	B	C	D	E	
ETKM TRM8 2000	2	150	165	150	122	135	14
ETKM TRM8 2500	2,5	195	140	177	150	110	18
ETKM TRM8 3000	3	240	185	260	200	135	31,2
ETKM TRM8 3500	3,5	240	185	260	200	135	32
ETKM TRM8 4000	4	240	185	260	200	135	33
ETKM TRM8 5000	5	240	205	260	200	155	40
ETKM TRM8 6300	6,3	280	130	410	176	125	52
ETKM TRM8 8000	8	280	150	410	176	145	57
ETKM TRM8 10000	10	280	150	410	176	145	60

